

Solace Pro Grip Kit

by **LOVENSE**

Product Information

Product model: Solace Pro Grip Kit

Country of origin: China

Manufacturer: HYTTO PTE. LTD.

Address: 152 Beach Road, #11-05 Gateway East, Singapore 189721

Email: support@mail.lovense.com

Factory: Shenzhen Love Sense Technology Co. Ltd.

Address: 2nd floor, Block B, Building 6, Pingshan Minqi Science Park, No. 65, Lishan Road, Pingshan Community, Taoyuan Street, Nanshan District, Guangdong Province, China

Informations sur le produit

Modèle: Solace Pro Grip Kit

Pays d'origine: Chine

Fabricant: HYTTO PTE. LTD.

Adresse: 152 Beach Road, #11-05 Gateway East, Singapore 189721

Email: support@mail.lovense.com

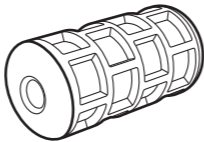
Usine: Shenzhen Love Sense Technology Co. Ltd.

Adresse: 2nd floor, Block B, Building 6, Pingshan Minqi Science Park, No. 65, Lishan Road, Pingshan Community, Taoyuan Street, Nanshan District, Guangdong Province, China

What's Included



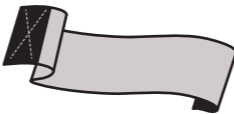
(1) Solace Pro Neutral Hole Sleeve x 1



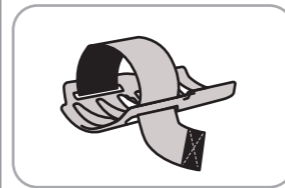
(2) Universal Sleeve Holder x 1



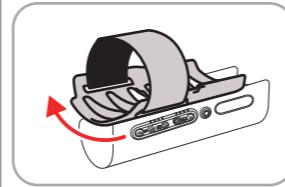
(3) Velcro Band x 1



Usage

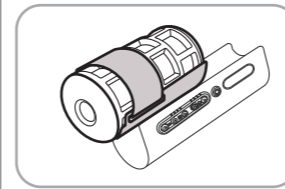


a) Thread the band through the loop on the sleeve holder and make room for the sleeve.



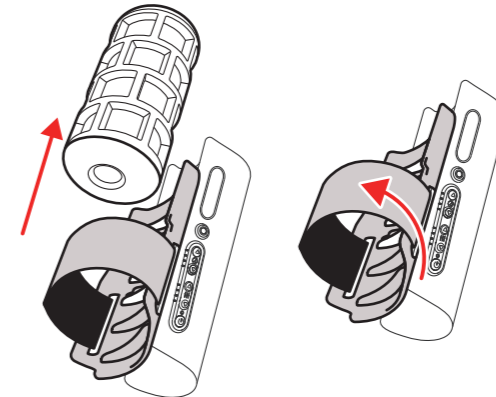
b) Align the teeth on the holder with the grooves on Solace Pro then rotate clockwise.

*** DO NOT attach a sleeve or toy heavier than 500g.**



c) Secure the sleeve with the band and adjust tightness to your preference.

Cleaning



Remove the sleeve,
then rotate anti-clockwise to detach the holder.
Wipe the band and holder with a wet cloth,
and wash the sleeve with water.

Warning

- Clean the sleeve before and after use.
- Clean with warm water.
- Do NOT use soap on the sleeve, as it may degrade the material.
- Dry thoroughly before storing.
- To avoid aggravating pre-existing conditions, do not use this device on swollen, inflamed skin, or on any lacerations.

Avertissement

- Nettoyez le manchon avant et après utilisation.
- Nettoyer à l'eau tiède.
- N'utilisez PAS de savon sur le manchon, car cela pourrait endommager le matériau.
- Bien sécher avant de le ranger.
- Pour éviter d'aggraver des conditions préexistantes, n'utilisez pas cet appareil sur une peau gonflée, enflammée ou sur des lacérations.

Warnung

- Reinigen Sie die Hülle vor und nach Gebrauch.
- Mit warmem Wasser reinigen.
- Bitte verwenden Sie keine Seife auf der Schutzhülle, da dies das Material beschädigen könnte.
- Vor der Lagerung gründlich trocknen.
- Um eine Verschlimmerung bereits bestehender Erkrankungen zu vermeiden, verwenden Sie dieses Gerät nicht auf geschwollener, entzündeter Haut oder Schnittwunden.

EN

FR

DE

单页尺寸：86X107mm

总页数：12